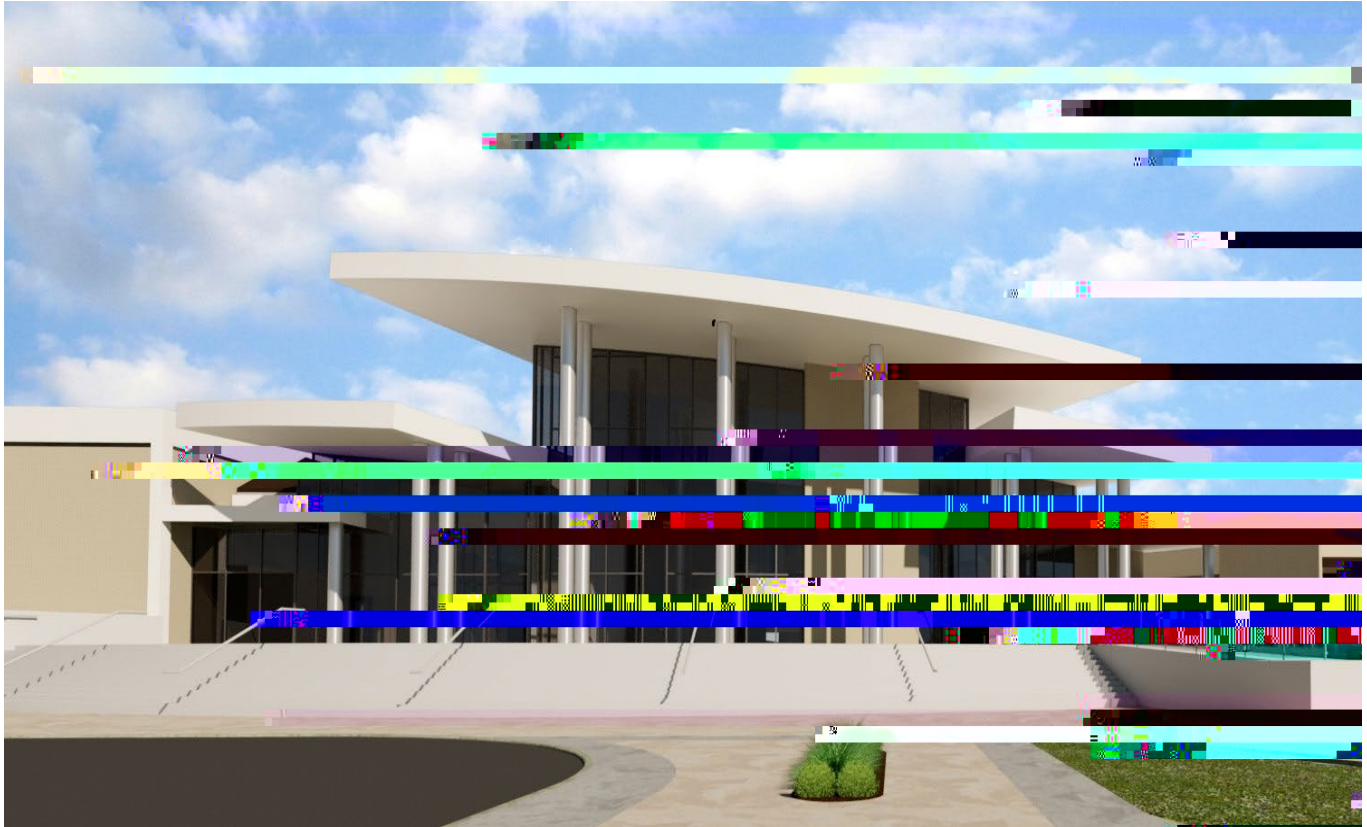


JOHN A. LOGAN COLLEGE *2022 - 2027* STRATEGIC LONG-RANGE PLAN



Statement of Mission

To enrich lives through learning and
community engagement.

Data Utilized for Decision Support



Analysis of Data

Five-Star Scoring



Open-Ended Feedback Responses



Sentiment Analysis

STATEMENT OF MISSION

STATEMENT OF CORE VALUES

Student-centered:

STRATEGIC PILLARS

"To enrich lives through learning and community engagement." – Mission

Student

- 1.1 Champion student success through a commitment to access, diversity, equity, and inclusion
- 1.2 Promote persistence, completion, transfer, job placement, and lifelong learning
- 1.3 Deliver excellent academic programs that adapt and respond to student and community needs
- 1.4 Provide innovative services and technologies

students

Arts, Culture, & Community

- 2.1 Foster an equitable and inclusive community which enhances life through arts, culture, and community engagement
- 2.2 Be a regional leader in community engagement through opportunities to attend programs and exhibits of fine and performing arts, athletic events, and enhanced offerings for health and wellness
- 2.3 Deliver responsive

Regional

- 3.1 Promote equitable and inclusion principles
- 3.2 Provide training and education regional
- 3.3 Partner with local and state entities to attract, expand, and retain businesses in southern Illinois
- 3.4 Collaborate with community and business partners to advance regional

Organizational

- 4.1 Demonstrate a culture of service excellence by incorporating our core
- 4.2 Listen, collaborate
- 4.3 Promote continuous improvement and learning opportunities
- 4.4 Promote processes and technology to support employees and

Through innovation and equitable learning experiences, Southern Illinois College will be an excellence that inspires, cultivates learning, and promotes career readiness.

1. STUDENT SUCCESS

3. REGIONAL CAREER AND ECONOMIC DEVELOPMENT

4. ORGh.2 442.8TmRtd(Rqw dw61111sw 12.0OI)5.6D0(TJye36 P35.6BTd1

FY23 INSTITUTIONAL GOALS